

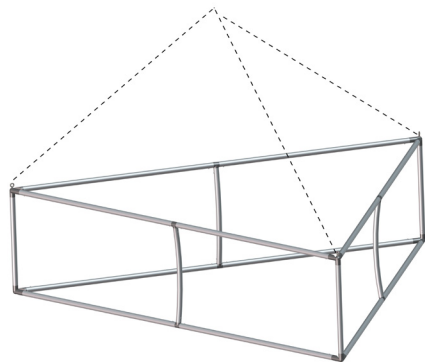
Formulate Essential Triangle Hanging Structures

ESS-TRI

Formulate™ Essential Triangle tension fabric hanging structures are available in numerous sizes. The economy aluminum tube frame features bungee cord for easy connections, hanging cables and a zippered pillowcase graphic. All sizes come with a carry bag and feature a one year limited hardware warranty.



Single sided graphic



Frame



Double sided graphic



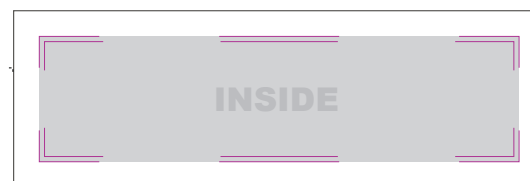
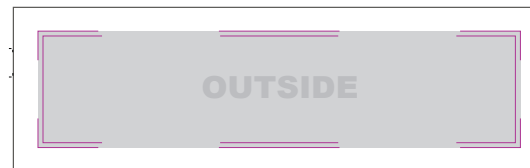
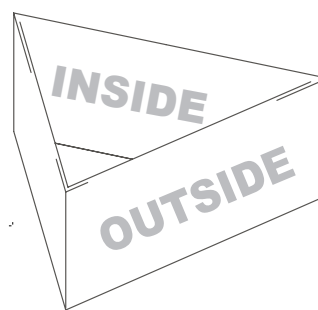
Graphic with printed bottom

features and benefits:

- Economy aluminum tube frame features bungee cords for easy connections
- Quick set up
- Graphics available double or single sided
- Kit Includes: one frame, pillowcase zipper fabric graphic (sold separately), hanging cables and carry bag
- One year limited hardware warranty against manufacturer defects

dimensions:

Hardware	Shipping
Hardware can be found on page 2	Shipping dimensions: 0802: 54"l x 14"w x 9"h 1372mm(l) x 356mm(w) x 229mm(h)
Graphics	0803: 54"l x 14"w x 9"h 1372mm(l) x 356mm(l) x 229mm(h)
Graphic dimensions can be found in the graphic templates, which can be viewed at www.exhibitors-handbook.com/graphic-templates	0804: 54"l x 14"w x 9"h 1372mm(l) x 356mm(w) x 229mm(h)
Graphic Material: 5 oz. Soft Knit Dye-sublimated zipper pillowcase fabric	1002: 65"l x 14"w x 9"h 1651mm(l) x 356mm(w) x 228.6mm(h)
	1003: 65"l x 14"w x 9"h 1651mm(l) x 356mm(w) x 229mm(h)
	1004: 65"l x 14"w x 9"h 1651mm(l) x 355.6mm(l) x 229mm(h)
	1202: 55"l x 13"w x 11"h 1397mm(l) x 330mm(w) x 279mm(h)
	1203: 55"l x 13"w x 11"h 1397mm(l) x 330mm(w) x 279mm(h)
	1204: 55"l x 13"w x 11"h 1397mm(l) x 330mm(w) x 279mm(h)
	Approximate shipping weight (includes hardware and carry bag only): 0802: 25 lbs / 11.3 kgs 0803: 28 lbs / 12.7 kgs 0804: 31 lbs / 14.1 kgs 1002: 28 lbs / 12.7 kgs 1003: 31 lbs / 14.1 kgs 1004: 34 lbs / 15.4 kgs 1202: 32 lbs / 14.5 kgs 1203: 36 lbs / 16.3 kgs 1204: 40 lbs / 18.1 kgs



We are continually improving and modifying our product range and reserve the right to vary the specifications without prior notice. All dimensions and weights quoted are approximate and we accept no responsibility for variance. E&OE. See Graphic Templates for graphic bleed specifications.

TRI-8' WIDTH				
HEIGHT	HARDWARE CODE	SINGLE-SIDED GRAPHIC CODE	DOUBLE-SIDED GRAPHIC CODE	BOTTOM ZIP-IN PANEL (PRINTED) CODE
2'	TRI-0802	TRI-0802-G	TRI-0802-GDBL	TRI-0802-GPBP
3'	TRI-0803	TRI-0803-G	TRI-0803-GDBL	TRI-0803-GPBP
4'	TRI-0804	TRI-0804-G	TRI-0804-GDBL	TRI-0804-GPBP



Single sided graphic



Double sided graphic



Printed zip-in bottom panel

TRI-10' WIDTH				
HEIGHT	HARDWARE CODE	SINGLE-SIDED GRAPHIC CODE	DOUBLE-SIDED GRAPHIC CODE	BOTTOM ZIP-IN PANEL (PRINTED) CODE
2'	TRI-1002	TRI-1002-G	TRI-1002-GDBL	TRI-1002-GPBP
3'	TRI-1003	TRI-1003-G	TRI-1003-GDBL	TRI-1003-GPBP
4'	TRI-1004	TRI-1004-G	TRI-1004-GDBL	TRI-1004-GPBP

TRI-12' WIDTH				
HEIGHT	HARDWARE CODE	SINGLE-SIDED GRAPHIC CODE	DOUBLE-SIDED GRAPHIC CODE	BOTTOM ZIP-IN PANEL (PRINTED) CODE
2'	TRI-1202	TRI-1202-G	TRI-1202-GDBL	TRI-1202-GPBP
3'	TRI-1203	TRI-1203-G	TRI-1203-GDBL	TRI-1203-GPBP
4'	TRI-1204	TRI-1204-G	TRI-1204-GDBL	TRI-1204-GPBP

SET UP INSTRUCTIONS:

STEP 1: TOP AND BOTTOM SHAPE ASSEMBLY

1. CONNECT BUNGEE TUBE AND MATCHING NUMBERS.

2. CONNECT OPEN ENDED TUBES BY MATCHING NUMBERS.

STEP 2: SPREADER ATTACHMENT

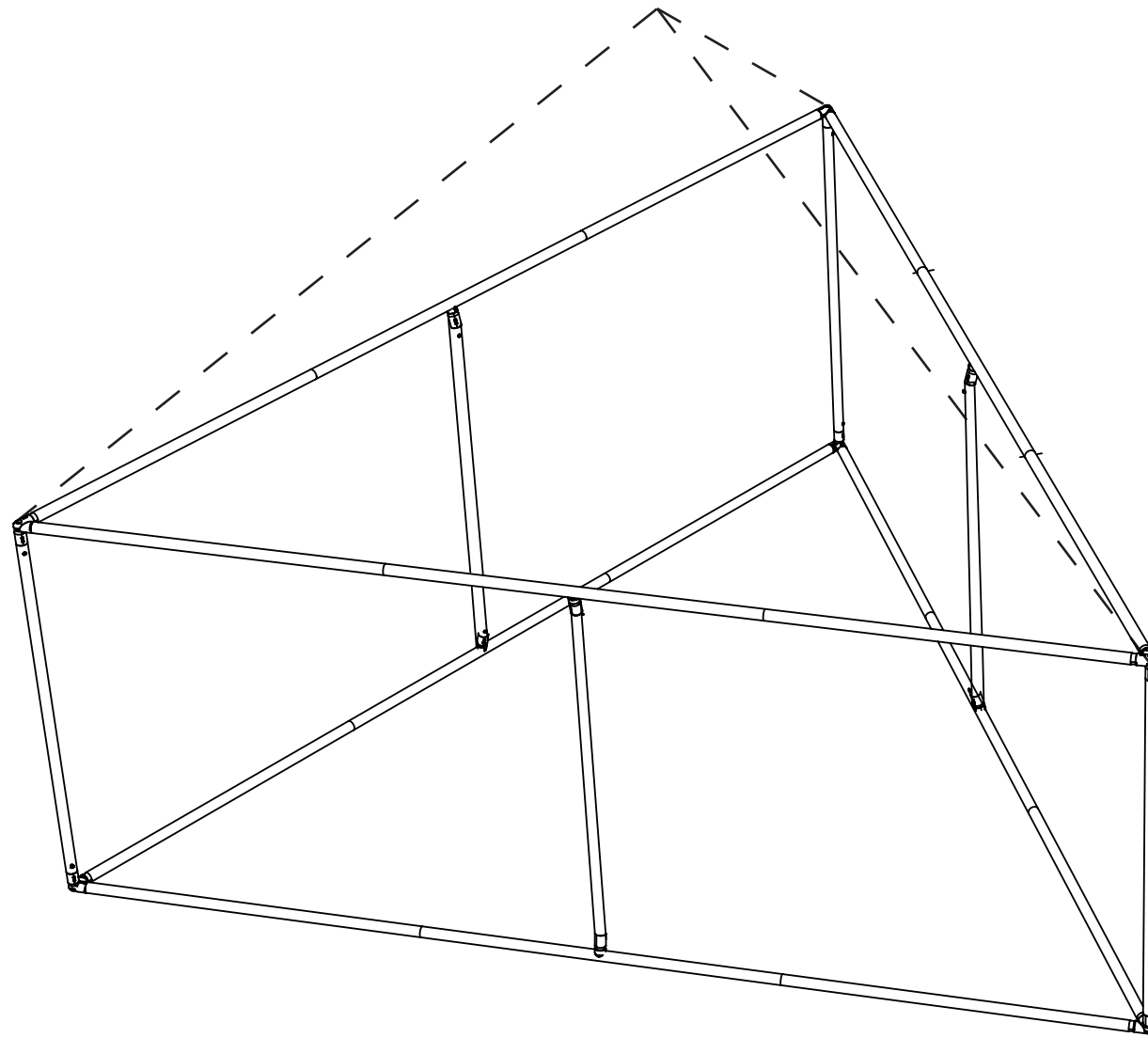
1. CONNECT BOTTOM OF SPREADER TO BOTTOM SHAPE STRUCTURE WITH PUSH BUTTONS BY MATCHING LETTERS

2. CONNECT TOP OF SPREADER TO TOP SHAPE STRUCTURE WITH PUSH BUTTONS BY MATCHING LETTERS

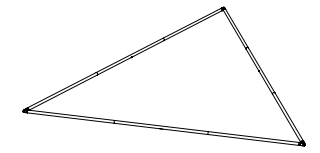
STEP 3: GRAPHIC ATTACHMENT

1. SLIDE PILLOWCASE GRAPHIC INTO FRAME.

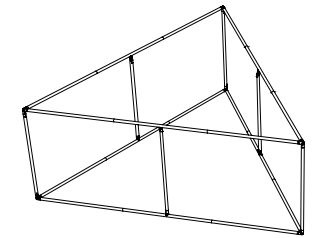
2. ZIP GRAPHIC CLOSED.



STEP 1



STEP 2



STEP 3

